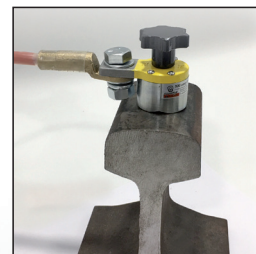


Electronic Detector for Catenary Lines

Voltage Detectors

SAFETY CATALOGUE

DC voltage detector
Optical & Acoustic



* Magnet applicable to the detector
VTC-OA I

Optical & Acoustic

Code	Ref.
645210	VTC-OA
645211	VTC-OA I *



647 VTC-OA

- **Voltage range:** 500V < Vt < 5000V
- **Usage frequency:** DIRECT current
- **Operating temperature:** -25°C to 55°C
- **Humidity Range:** 20 to 96 %
- **Indication of alert status:** Through high luminosity green LED.
There is no voltage or it is below the established detection threshold.
- **Indication of voltage presence:** Optical/Acoustic indication through high luminosity red LED and high pressure acoustic buzzer*
- **Battery:** 9V battery, type 6LR61
Low battery indication by flashing green LED, when battery level is critical green led is off.
- **Earthing cable:** Extra flexible cable with silicon sheath and 6m long
(possibility of other lengths at customer's request)
With universal head
- **Insulating pole:** Full self-checking system with automatic disconnection after two minutes WITHOUT DETECTION.
- **Self-checking:** Automatic start-up system using detection of voltage (approx. 400V dc)
- **Automatic start-up:** Possibility of exchanging electrode
- **Electrode:** Threshold 1 - From 350 to 490V: Red led
Threshold 2 - From 900 to 1100V: Red and orange led
- **Threshold voltage:**