

Earthing Devices

Safety

Equipment for the railway sector

30910 PATF-PC

Integrated earthing equipment for railway system catenaries and double catenaries. With one PC clamp to enable earthing of lines for repair work.

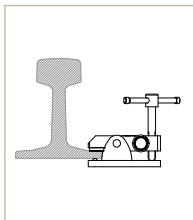
According to IEC 61230 standard.



Railway sector



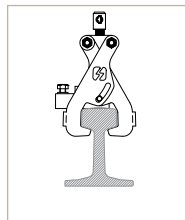
TTR
Earth lathe



Icc 19 kA/1s



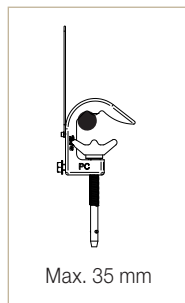
TTSR
Earth lathe



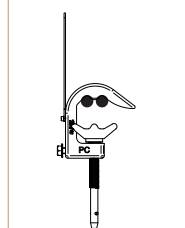
Icc 19 kA/1s



PC
Clamp



Max. 35 mm



Max. 35 mm

Icc 19 kA/1s

Composed of:

- 1 PC aluminium alloy clamps with screw tighten for cylindrical conductors with diameter 35 max.
- 1 copper cables with PVC insulation of 50 mm² section and 7 m of length.
- 1 TTR or TTSR milling earthing lathe.
- 1 nylon bags to store and transport the equipment.

Code	Ref.	Short circuit current ICC Max.
666120	PATF-PC/05007-TTR	
666130	PATF-PC/05007-TTSR	12 kA/1s

* Depending on availability, the colour of the bag may vary.