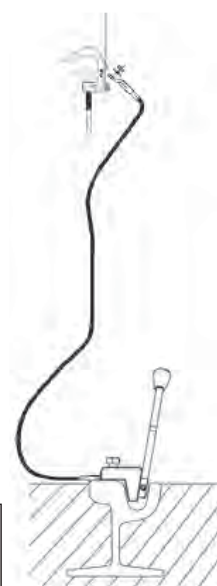


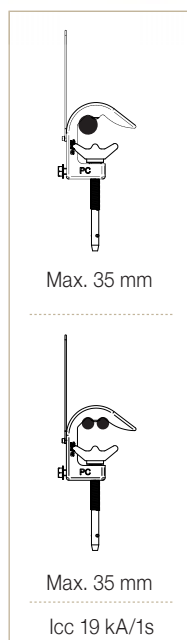
30910 PATF-PC-TTIR

Integrated earthing equipment for underground tramway rails. With one PC clamp to enable earthing of lines for repair work.

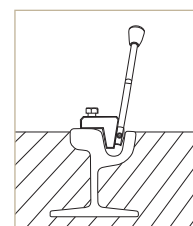
According to IEC 61230 standard.



PC
Clamp



TTIR
Earth lathe



Icc 19 kA/1s

Composed of:

- 1 PC aluminium alloy clamps with screw tighten for cylindrical conductors with diameter 35 max.
- 1 copper cables with PVC insulation of 50 mm² section and 7 m of length.
- 1 TTIR milling earthing lathe.
- 1 nylon bags to store and transport the equipment.

Code	Ref.	Short circuit current ICC Max.
666110	PATF-PC/05007-TTIR	12 kA/1s

* Depending on availability, the colour of the bag may vary.