

POSSIBILITY  
OF CONFIGURATION  
TO MEASURE



## 31001 SZ-51B

In the event of an electrical accident, fast intervention is essential. The panel contains all the rescue tools in a single place making it accessible to all users when an intervention is necessary.

| Code    | Description | Ref.   |
|---------|-------------|--------|
| 690130  | Spanish     | SZ-51B |
| 690130I | English     | SZ-51B |
| 690130F | French      | SZ-51B |

Composed of a 1 x 1.6 m board that contains the following elements:

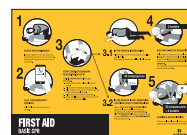
- 1 BS-45 rescue pole
- 1 5-36 kV voltage detector with pole
- 1 plastic case for gloves
- 1 pair of dielectric gloves (class 3)
- 1 VC-300/25 insulated wire cutter
- 1 pipette
- 1 45 kV insulating stool
- 1 pair of insulating boots (class 2)
- 1 first aid plate
- 1 instruction plate

Product supplied with screws and nail plug (to hang).

Code: 640210  
Ref: VTO-5/36-P

|            |        |
|------------|--------|
| Code       | Ref.   |
| ES X690165 | SZ08 E |
| EN X690166 | SZ08 I |
| FR X690167 | SZ08 F |

Code: 610100  
Ref: BS-45



|            |          |
|------------|----------|
| Code       | Ref.     |
| ES X690170 | PA-29P E |
| EN X690171 | PA-29P I |
| FR X690172 | PA-29P F |



Code: 695120  
Ref: SZ-01

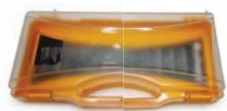
Code: 715160 (Size 43)  
Ref: DB2 T43  
Different sizes available.



Code: 580155  
Ref: STM-45



Code: 715121  
Ref: VC-300/25



Code: 545115  
Ref: CGS



Code: 530270  
Ref: SG-30