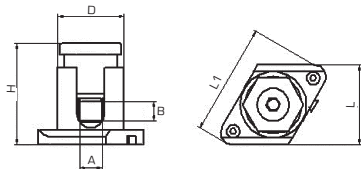
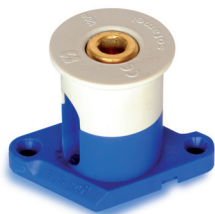


# Studded Clamps

CONNECTION CATALOGUE



## Mod. BUS

Polyamide one-pole strip block



BUS strip block manufactured from 6.6 auto-extinguishing polyamide according to CE Directive. All terminals are linkable between them and are suitable for connections and panel boards applications.



Code	Ref.	Section (mm <sup>2</sup> )	Dimensions (mm)						Kg x 100	Bag	Box
			A	B	D	H	L	L1			
233130	BUS-10/16	10/16	6,5	10,0	25,0	40,0	33,0	48,0	2,600	-	50
233150	BUS-25/35	25/35	8,5	12,0	25,0	43,0	33,0	48,0	3,400	-	40
233160	BUS-50	50	10,0	14,5	31,5	52,0	40,0	58,0	5,300	-	25
233170	BUS-70	70	12,0	26,0	38,0	68,0	47,0	69,0	8,000	-	20
233180	BUS-95	95	15,5	30,0	45,0	85,0	51,0	83,0	11,300	-	15
233190	BUS-120	120	14,0	34,0	48,0	61,0	54,0	83,0	75,700	-	4
233200	BUS-150	150	21,0	34,0	52,0	80,0	73,5	122,0	14,100	-	15