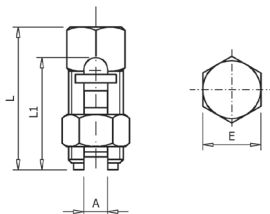
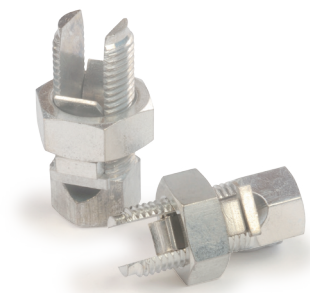


# Split-Bolt Connectors

CONNECTION CATALOGUE



## 160 APB

Bimetallic split-bolt connector

APB split-bolt connector manufactured from brass with tinplated finish to improve electrical contact. Incorporates a buffer stop to differentiate cable connections.

Code	Ref.	Main		Tap		Dimensions (mm)				Kg x 100	Bag	Box
		Max.	Min.	Max.	Min.	L	L1	E	A			
160100	APB-25/25	25	16	25	2,5	42,0	34,0	16,9	7,2	7,480	10	60
160110	APB-35/35	35	16	35	2,5	42,0	34,0	16,9	7,4	8,034	10	60
160120	APB-50/50	50	25	50	2,5	46,6	37,6	18,0	9,6	8,800	10	40
160130	APB-70/70	70	35	70	2,5	49,0	42,5	20,0	11,0	9,600	10	40
160140	APB-120/120	120	50	120	10	61,1	53,2	26,9	15,3	11,200	5	15