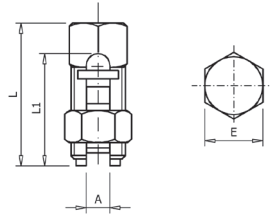
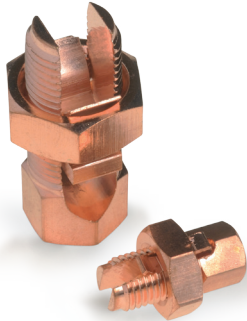


# Split-Bolt Connectors

CONNECTION CATALOGUE



## Mod. APC

Copper split-bolt connector

APC split-bolt connector manufactured from brass with a copperplated finish to improve electrical contact.

Code	Ref.	Main		Tap		Dimensions (mm)				Kg x 100	Bag	Box
		Max.	Min.	Max.	Min.	L	L1	E	A			
165010	APC-6/6	6	4	6	1,5	24,0	19,0	10,0	3,6	1,670	25	200
165020	APC-10/6	10	6	10	2,5	27,4	21,8	12,0	4,5	2,790	25	150
165030	APC-16/16	16	10	16	2,5	34,0	22,7	13,0	5,6	3,820	25	100
165040	APC-25/25	25	16	25	2,5	41,8	33,1	17,0	7,2	6,840	10	50
165090	APC-35/35	35	16	35	2,5	41,8	33,8	17,0	7,4	6,640	10	40
165100	APC-50/50	50	25	50	2,5	46,4	38,0	18,0	9,6	7,780	10	40
165110	APC-70/70	70	35	70	2,5	49,4	42,2	20,0	10,8	8,500	10	30
165115	APC-95/95	95	50	95	10	53,7	46,4	24,0	12,1	9,300	10	20
165120	APC-120/120	120	50	120	10	60,5	53,5	26,7	15,3	10,100	5	15
165130	APC-185/185	185	70	185	70	69,1	61,0	30,0	17,6	11,000	5	10
165140	APC-240/240	240	70	240	70	75,6	68,0	35,4	21,5	12,500	5	10