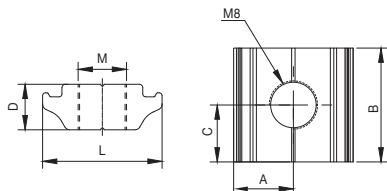


# Earthing Rods and Accessories

## Connections



### 11404 SCF/GC

#### Earthing clip

Earthing clamp for photovoltaic structure, Al+stainless steel.

It is valid for solar structures type G1. For the rest of the structures, the profile must be drilled and M8 must be used.

Code	Ref.	Dimensions (mm)						Kg x 100	Bag	Box
		A	B	C	D	L	M			
501070	SCF/GC	10.5	20	10	8	21	M8	-	10	500