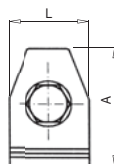
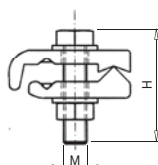


Earthing Rods and Accessories

Connections



11302 GTR

Earthing rod clamp

GTR clamps are made of brass with stainless steel screws. Highly robust, designed for grounding connections.

Code	Ref.	Main		Tap		Dimensions (mm)				Kg x 100	Bag	Box
		Max.	Min.	Max.	Min.	A	L	H	M			
170100	GTR-50/150	150	50	16	10	61	40	67	12	33.000	-	15