

sofamel

Product Technical Specifications

Mod. TRP

Copper parallel earthing clamp



Product Features

The TRP clamps are manufactured with brass with steel screws. They are available with one or two screws and in two different lengths depending on the application required. With high robustness, they are designed for overhead line cables.

Dimensions

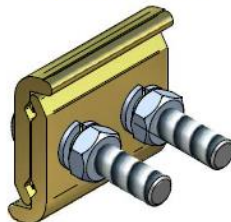
TRP-1-25/150

Peso/Weight = 280g



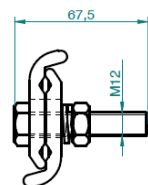
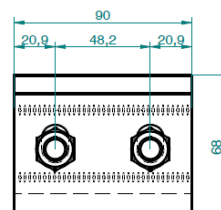
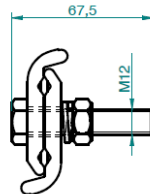
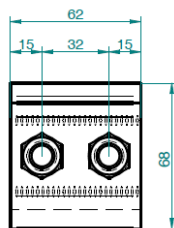
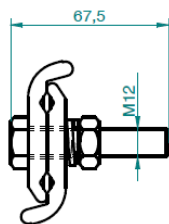
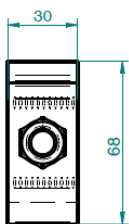
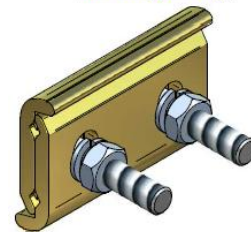
TRP-2-25/150

Peso/Weight = 570g



TRP-2-25/150-R

Peso/Weight = 710g



175100	TRP-1-25/150				
175110	TRP-2-25/150	150	25	150	25
175120	TRP-2-25/150-R				
Cód.	Ref.	Max.	Mim.	Max.	Mim.
		Principal/Main		Derivado/Tap	

Datos sujetos a cambios
2020, Mayo 19

Versión: R2-7.2 COM01

© 2017 Sofamel SLU
Todos los derechos reservados.

Las especificaciones están sujetas a cambios sin previo aviso.