

sofamel

Product Technical Specifications

Mod. LBE-ID

Bolt-fastened tinplated mechanical clamp

Product features

LBE-ID are made of aluminum alloy forgings and stainless-steel screws. The compression of the conductors is by mechanical screw tightening. Its function is to make a connection or bypass of aluminum conductors of different sections. This clamp can be used for connecting aluminum main to copper branch cable or aluminum main to aluminium branch with cross section rate.

Minimum thickness of tin: 20 μ .

Certificates

Manufactured following dimensional characteristics described on standard **UNE 211024:2015** Cable accessories. Elements of connection to be used in low and medium voltage underground distribution networks up to 18/30 (36) kV.

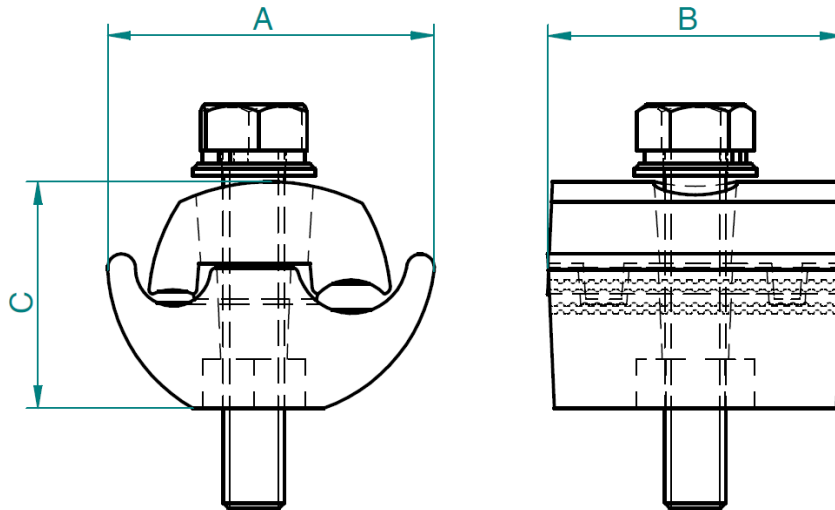




Model LBE-ID

Bolt-fastened tinplated mechanical clamp

Section and dimensions



155001	LBE-2-ID	49	35	32
155002	LBE-3-ID	55	44	38
155003	LBE-4-ID	46	32	31
Cód.	Ref.	A	B	C

155001	LBE-2-ID	120	50	35	6
155002	LBE-3-ID	185	50	70	10
155003	LBE-4-ID	70	25	70	25
Cód.	Ref.	Max	Min.	Max	Min.
		Principal / Main		Derivado / Tap	

*Aluminio con acabado estañado 20μ. Tornillería en acero inoxidable.

Aluminium alloy with a 20μ tinplate finish. Stainless steel hardware.