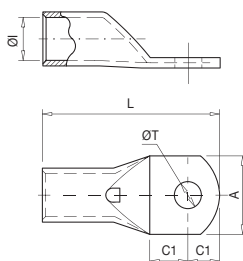


# Copper Connectors

## Connections



### 10101 T

#### Copper cable lug

T cable lug manufactured from electrolytic copper tubing with a tin-plated surface finish to improve electrical contact. Incorporates inspection hole to check the correct cable positioning.

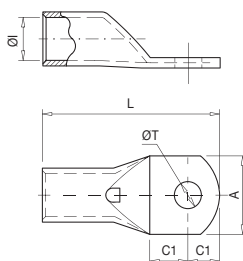
According to IEC 61238-1-1 standard.



Code	Ref.	Section (mm <sup>2</sup> )		Dimensions (mm)						Kg x 100	Bag	Box
				ØI	L	ØT	A	C1	C2			
010100	T-1,5/4	1.5	4	1.8	18.0	4.3	8.7	5.0	4.0	0.074	100	3000
010110	T-1,5/5		5		18.5	5.3	8.7	5.0	4.5	0.071	100	3000
010120	T-1,5/6		6		20.0	6.4	11.0	6.0	5.0	0.081	100	2000
010130	T-2,5/4	2.5	4	2.7	18.0	4.3	8.7	5.0	4.0	0.111	100	2000
010140	T-2,5/5		5		19.0	5.3	8.7	5.5	4.5	0.112	100	2000
010150	T-2,5/6		6		20.0	6.4	9.0	6.0	5.0	0.110	100	1800
010160	T-2,5/8	8	24.0	8.3	12.0	8.0	7.0	0.128	100	1800		
010170	T-4/4	4	4	3.3	21.0	4.3	8.7	5.0	4.5	0.168	100	1600
010180	T-4/5		5		21.0	5.3	8.7	5.0	4.5	0.163	100	1600
010190	T-4/6		6		23.0	6.4	11.0	6.0	5.5	0.171	100	1600
010200	T-4/8	8	26.5	8.3	14.0	8.0	7.0	0.179	100	1200		
010210	T-6/4	6	4	3.8	23.0	4.3	10.3	6.0	5.0	0.204	100	1600
010220	T-6/5		5		23.0	5.3	10.3	6.0	5.0	0.202	100	1500
010230	T-6/6		6		24.0	6.4	10.3	6.0	5.5	0.200	100	1500
010240	T-6/8	8	27.0	8.3	14.0	8.0	7.0	0.208	100	1300		
010260	T-10/5	10	5	4.7	25.5	5.3	11.9	6.0	5.5	0.364	100	1000
010270	T-10/6		6		27.0	6.4	11.9	7.0	6.0	0.361	100	1000
010280	T-10/8		8		30.0	8.3	15.0	8.0	8.0	0.388	100	800
010290	T-10/10	10	34.0	10.5	18.0	10.5	9.5	0.414	100	600		
010310	T-16/5	16	5	5.6	26.5	5.3	11.9	6.0	5.0	0.465	100	700
010320	T-16/6		6		28.5	6.4	11.9	7.0	6.0	0.489	100	700
010330	T-16/8		8		31.0	8.3	15.0	8.0	7.5	0.500	100	600
010340	T-16/10	10	34.5	10.5	18.0	10.0	9.0	0.524	100	500		
010350	T-16/12	12	38.5	13.0	20.0	12.0	11.0	0.552	100	500		
010360	T-25/6	25	6	7.1	31.0	6.4	13.8	7.0	6.0	0.700	50	450
010370	T-25/8		8		34.0	8.3	15.0	8.5	7.5	0.742	50	450
010380	T-25/10		10		39.0	10.5	18.0	11.0	10.0	0.811	50	400
010390	T-25/12	12	41.0	13.0	21.0	12.0	11.0	0.793	50	300		
010410	T-35/6	35	6	8.7	34.0	6.4	15.7	7.0	6.0	1.081	50	300
010420	T-35/8		8		38.0	8.3	15.7	9.0	8.0	1.165	50	300
010430	T-35/10		10		42.0	10.5	19.0	11.0	10.0	1.221	50	200
010440	T-35/12	12	44.0	13.0	21.0	12.0	11.0	1.231	50	200		
010450	T-35/14	14	48.0	14.5	21.0	14.0	13.0	1.315	50	200		
010500	T-50/6	50	6	9.8	41.0	6.4	17.9	8.0	7.0	1.570	20	200
010510	T-50/8		8		43.0	8.3	17.9	9.0	8.0	1.591	20	180
010520	T-50/10		10		47.0	10.5	20.0	11.0	10.0	1.706	20	160
010530	T-50/12		12		51.0	13.0	21.0	13.0	12.0	1.746	20	160
010540	T-50/14		14		53.0	14.5	25.0	14.0	13.0	1.793	20	140
010550	T-50/16		16		55.0	16.5	26.0	15.0	14.0	1.771	20	140

# Copper Connectors

## Connections



### 10101 T

#### Copper cable lug

T cable lug manufactured from electrolytic copper tubing with a tin-plated surface finish to improve electrical contact. Incorporates inspection hole to check the correct cable positioning.

According to IEC 61238-1-1 standard.



Code	Ref.	Section (mm <sup>2</sup> )		Dimensions (mm)						Kg x 100	Bag	Box
				ØI	L	ØT	A	C1	C2			
010570	T-70/8	70	8	11.5	47.0	8.3	21.5	9.0	8.0	2.385	20	120
010580	T-70/10		10		51.0	10.5	21.5	11.0	10.0	2.510	20	120
010590	T-70/12		12		53.0	13.0	21.5	12.0	11.0	2.504	20	120
010600	T-70/14		14		58.0	14.5	25.0	15.0	13.0	2.698	20	100
010610	T-70/16		16		59.0	16.5	26.0	15.0	14.0	2.617	20	100
010630	T-95/8	95	8	13.5	52.0	8.3	24.7	10.0	9.0	3.354	20	80
010640	T-95/10		10		55.0	10.5	24.7	11.0	11.0	3.387	20	80
010650	T-95/12		12		57.0	13.0	24.7	12.0	12.0	3.468	20	80
010660	T-95/14		14		61.0	14.5	24.7	15.0	13.0	3.622	20	80
010670	T-95/16		16		64.0	16.5	27.0	16.0	15.0	3.690	20	80
010690	T-120/8	120	8	15.6	56.0	8.3	28.9	10.0	9.0	5.357	10	60
010700	T-120/10		10		58.0	10.5	28.9	11.0	10.0	5.452	10	60
010710	T-120/12		12		63.0	13.0	28.9	14.0	12.0	5.800	10	60
010720	T-120/14		14		67.0	14.5	28.9	16.0	14.0	6.068	10	60
010730	T-120/16		16		71.0	16.5	28.9	17.0	16.0	6.296	10	60
010750	T-150/10	150	10	16.5	69.0	10.5	30.4	13.0	11.0	7.125	10	50
010760	T-150/12		12		75.0	13.0	30.4	16.0	14.0	7.749	10	50
010770	T-150/14		14		79.0	14.5	30.4	18.0	16.0	7.891	10	50
010780	T-150/16		16		79.0	16.5	30.4	18.0	16.0	7.694	10	40
010800	T-185/10	185	10	18.8	74.0	10.5	34.0	13.0	11.0	9.842	10	40
010810	T-185/12		12		80.0	13.0	34.0	16.0	14.0	10.447	10	40
010820	T-185/14		14		84.0	14.5	34.0	18.0	16.0	10.991	10	40
010830	T-185/16		16		85.0	16.5	34.0	18.0	17.0	10.831	10	40
010850	T-240/10	240	10	21.2	82.0	10.5	38.4	14.0	12.0	12.466	5	25
010860	T-240/12		12		86.0	13.0	38.4	16.0	14.0	12.916	5	25
010870	T-240/14		14		90.0	14.5	38.4	18.0	16.0	13.352	5	25
010880	T-240/16		16		91.0	16.5	38.4	18.0	17.0	13.198	5	25
010900	T-300/12	300	12	23.4	93.0	13.0	41.7	16.0	14.0	15.780	5	15
010910	T-300/14		14		94.0	14.5	41.7	16.0	15.0	17.249	5	15
010920	T-300/16		16		100.0	16.5	41.7	19.0	18.0	18.161	5	15
010940	T-400/12*	400	12	26.8	110.0	13.0	47.8	21.0	19.0	24.560	5	10
010950	T-400/16*		16		110.0	16.5	47.8	21.0	19.0	24.246	5	10
010960	T-400/20*		20		116.0	21.0	47.8	24.0	22.0	25.010	5	10
010980	T-500/16*	500	16	29.8	115.0	16.5	54.8	22.0	19.0	42.990	1	9
010985	T-500/20*		20		120.0	21.0	54.8	24.0	22.0	46.702	1	9
010988	T-630/16*		630		16	34.5	128.0	16.5	64.4	22.0	19.0	66.260
010990	T-630/20*	20		134.0	21.0		64.4	24.0	23.0	68.680	1	5

\*Not according to UL certified.