

sofamel

Product Technical Specifications

Mod. TDT

Copper cable lug with 2 holes palm

Functionality

Copper cable lug with two holes palm is manufactured from electrolytic copper with a tinned finish to improve electrical contact and increase corrosion protection.

Product Features

Manufactured from electrolytic copper with a tinned finish to improve electrical contact.

Raw Material Features

COPPER

Copper type: **99.9% electrolytic copper.**

Specific gravity: **8.95 gr/cm³.**

Conductivity at 20°C: **58.14 Siemens x m/mm².**

The Sofamel cable lugs are marked with the Sofamel logo and the section and the ØT.

The sections of this product can be from **50 to 500 mm²**.

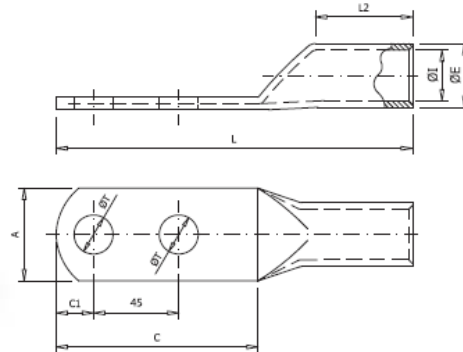




Mod. TDT

Copper cable lug with 2 holes palm

Dimensions



Code	Ref.	Section (mm ²)	Dimensions (mm)								Kg x 100	Bag	Box
			OE	OI	L	OT	A	L2	C1	C			
002530	TDT-50/12	50	14,0	11,0	130,0	13,0	20,5	40,0	14,5	75,0	5,757	30	60
002590	TDT-70/12	70	15,0	12,0	130,0	13,0	21,4	40,0	17,0	80,0	6,365	30	60
002650	TDT-95/12	95	18,0	14,0	132,0	13,0	26,0	42,0	17,0	80,0	10,676	10	30
002710	TDT-120/12	120	20,0	16,0	135,0	13,0	29,0	42,0	17,0	80,0	11,952	10	30
002760	TDT-150/12	150	22,0	17,0	150,0	13,0	31,5	50,0	17,0	80,0	18,350	5	25
002810	TDT-185/12	185	23,0	18,2	150,0	13,0	33,0	50,0	17,0	80,0	18,678	5	20
002860	TDT-240/16	240	28,0	22,0	150,0	17,0	40,0	50,0	17,0	80,0	27,072	5	15
002900	TDT-300/16	300	32,0	25,0	180,0	17,0	46,0	68,0	21,5	89,0	44,516	6	12
002940	TDT-400/16	400	37,0	30,0	180,0	17,0	54,0	60,0	22,0	90,0	55,198	2	8
002980	TDT-500/16	500	40,0	31,0	180,0	17,0	57,5	60,0	23,5	93,0	72,520	2	8

Certificates

Manufactured according to the criteria established to comply with DIN 46235 Cable lugs, for compressions, cover plated type, for copper conductors.