

sofamel

Product Technical Specifications

Mod. RJU

Medium voltage copper joint

Functionality

Used to join two COBRE cables together.

Product Features

RJU joint are made from COBRE BAR ELECTROTICITIC incorporate a central stop that divides the connector into two equal parts, adding in both holes neutral grease to avoid oxidation of the connector.



Raw Material Features

Material: ELECTROLYTIC COPPER

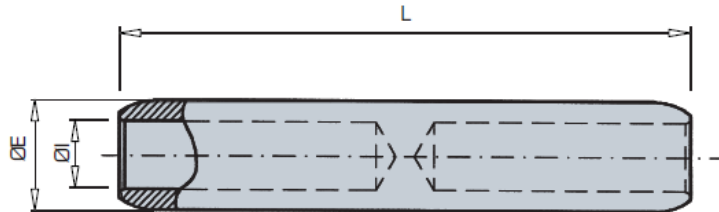
Specific weight in gr/cm ³	8.95
Conductivity at 20oC, siemens x m/mm ²	58.14
Resistivity at 20oC, in Ohms x mm ² /m	0.0172
Temperature coefficient	0.0039
Elasticity module, in Kg/mm ²	9000
Tensile strength in Kg/mm ²	22 ... 28
Elongation at breakage, in %	0.5



Mod. RJU

Medium voltage copper joint

Dimensions



RANGO / DIMENSIONES DEL PRODUCTO

Código	Ref.	Sección (mm ²)	Dimensiones (mm)		
			ØE	ØI	L
017160	RJU0-25	25	20	7,5	95
017170	RJU0-35	35	20	8,5	95
017180	RJU1-50	50	20	9,5	95
017190	RJU1-70	70	20	11	95
017200	RJU1-95	95	20	13	95
017210	RJU2-120	120	20	14,2	95
017220	RJU2-150	150	25	16	102
017230	RJU4-185	185	25	18	102
017240	RJU4-240	240	32	20	105

Certificates

CEI 61238: Mechanical and compression connectors for power cables of assigned voltages up to 36 kV (Um-42 kV). Part 1: Test methods and requirements.