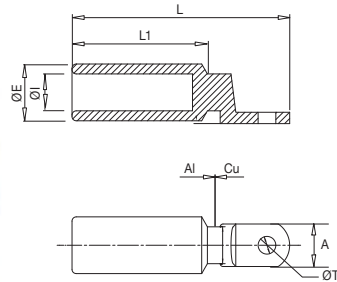


Bimetallic Connectors

Connections



10406 TBPE

Bimetallic cable lug

The TBPE tube is made of aluminum alloy of purity equal or higher than 99.5% and the blade is made of electrolytic copper with a purity greater than 99.9%. Through a friction welding process, both materials are joined to form the bimetallic connector. Incorporates neutral grease to avoid aluminium oxidation.

Code	Ref.	Section (mm ²)	Dimensions (mm)						Kg x 100	Bag	Box
			ØE	ØI	ØT	A	L1	L			
112190	TBPE-240	240	32	19.5	12.5	25	67	116	-	1	-
112200	TBPE-300	300	34	23.3	12.5	30	73	130	-	1	-
112210	TBPE-400	400	40	26	12.5	30	95.5	153.5	-	1	-