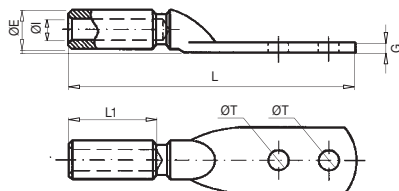


Bimetallic Connectors

Connections



10402 TBEM/S

Tinned bimetallic cable lug

TBEM/S bimetallic cable lug manufactured from aluminium alloy tube of purity equal or higher than 99.5%. The complete cable lug surface is tinned by means of an electrolytic process. Incorporates neutral grease to avoid aluminium oxidation. It is designed for underground cable connections.

Underground cables

Code	Ref.	Section (mm ²)	Dimensions (mm)						Kg x 100	Bag	Box
			ØE	ØI	ØT	L1	G	L			
125120	TBEM/S-50	50	20.0	9.0	13.0	47.5	7.7	170	12.000	1	60
125140	TBEM/S-95	95	20.0	12.5	13.0	47.5	7.7	170	11.200	1	50
125160	TBEM/S-150	150	25.0	15.5	13.0	64.5	11.6	190	19.400	1	40
125180	TBEM/S-240	240	32.0	19.5	13.0	64.5	11.6	199	27.800	1	30

* For other sizes, please inquire. Supplied without screws.