


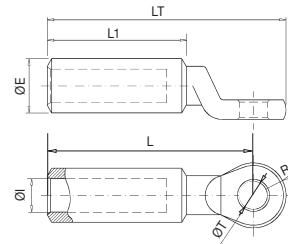
Connections / Bimetallic connectors

10403 TDC/S

Bimetallic cable lug

TDC/S bimetallic cable lug are manufactured from aluminum alloy bar (purity $\geq 99.5\%$), entirely tinned via electrolytic bath. Neutral grease is applied internally to prevent oxidation.

According to UNE 211024 standard and certified with the AENOR  mark.*



Code	Ref.	Section (mm ²)	Dimensions (mm)							Kg x 100	Bag	Box
			ØE	ØI	ØT	R	L1	L	LT			
111085	TDC/S-16/10 ¹	16	16,0	5,5	10,7	13,0	47,1	75,0	88,0	-	1	125
111090	TDC/S-16/12	16			12,9					5,300	1	125
111099	TDC/S-25/10 ¹	25			10,7					-	1	125
111100	TDC/S-25/12	25	16,0	6,5	12,9	13,0	48,0	75,0	88,0	5,000	1	125
111110	TDC/S-35/12 ¹	35			8,0					4,800	1	125
111118	TDC/S-50/8 *	50			20,0					9,0	9,0	13,0
111119	TDC/S-50/10 *	50	10,7	4,890		1	125					
111120	TDC/S-50/12 * ¹	50	12,9	4,840		1	125					
111130	TDC/S-70/12 ¹	70	25,0	11,0	10,7	15,0	65,0	98,0	113,0	4,300	1	125
111139	TDC/S-95/10 *	95			12,9					4,250	1	125
111140	TDC/S-95/12 * ¹	95			12,9					4,240	1	125
111150	TDC/S-120/12 ¹	120	25,0	13,7	12,9	18,0	65,0	104,0	122,0	9,210	1	80
111159	TDC/S-150/10 *	150			10,7					8,740	1	80
111160	TDC/S-150/12 * ¹	150			15,5					8,640	1	80
111170	TDC/S-185/12 ¹	185	32,0	17,0	12,9	20,0	100,0	145,0	165,0	15,000	1	50
111179	TDC/S-240/10 *	240			10,7					14,625	1	50
111180	TDC/S-240/12 * ¹	240			12,9					14,500	1	50
111184	TDC/S-300/10	300	40,0	23,3	10,7	20,0	100,0	145,0	165,0	30,750	1	32
111185	TDC/S-300/12	300			12,9					30,600	1	32
111186	TDC/S-300/16 ¹	300			16,7					28,400	1	32
111189	TDC/S-400/10	400	26,0	10,7	12,9	20,0	100,0	145,0	165,0	28,250	1	32
111190	TDC/S-400/12	400			12,9					-	1	32
111191	TDC/S-400/16 ¹	400			16,7					-	1	32

(*) Dimensions and tolerances according to UNE 211024.

(1) Dimensions according to DMA-C33-853/N.