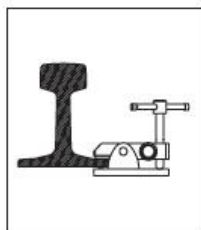
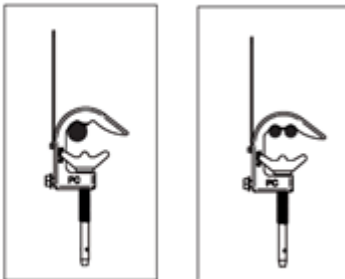


# sofamel

Product Technical Specifications

## PATF-PC-TTR

Grounding equipment for catenaries



### Functionality

Unipolar earthing equipment for railway system catenary lines with PC clamp which allows the earthing connection of the lines during repair and maintenance operations.



# PATF-PC-TTR

## Grounding equipment for catenaries

### Product composition

- ❖ 1 PC aluminum alloy clamp with screw tightening and bayonet shaft for cylindrical conductors with a diameter of 35 max.
- ❖ 1 copper cable with PVC insulation of 50 mm<sup>2</sup> section and 7 m long.
- ❖ 1 TTR earth lathe.
- ❖ 1 bag for transporting and storing the copper cable with earthing clamp and rail earthing clamp

### Product Features

#### Earthing Cable

**Section:** 50 mm<sup>2</sup> soft copper wire, covered with transparent PVC.

**Length:** 7 m.

**Hook up:** Attached with a stainless-steel suspension hook (Suspension Hook) and adopts a double-sided hook design.

**ICC:** 12kA/1s.

#### Contact wire Earthing Clamp

**Applicable maximum wire diameter:** 35 mm.

**Test probe (fuse contact wire):** clam with fuse contact wire.

**ICC:** 19kA/1s.

The PC clamp is attached to the bare conductor by screw tightening. They are ideal to be fixed on cylindrical conductors.

#### Rail Earthing Clamp

**Applicable rail:** It is suitable for use at the bottom of the 37kg/m, 50kg/m and UIC 60 rails of the Bureau.

**ICC:** 19kA/1s.

#### Equipment carrying bag

Each set of devices (Copper Cable with Earthing Clamp and Rail Earthing Clamp) include a carrying bag.

The manufacturer, model and date of manufacture are marked in the appropriate position of the grounding equipment, and the marking does not affect the use and function.

#### Certified

The equipment complies with the European standard

**IEC 61230:** Live working - Portable equipment for earthing or earthing and short-circuiting

