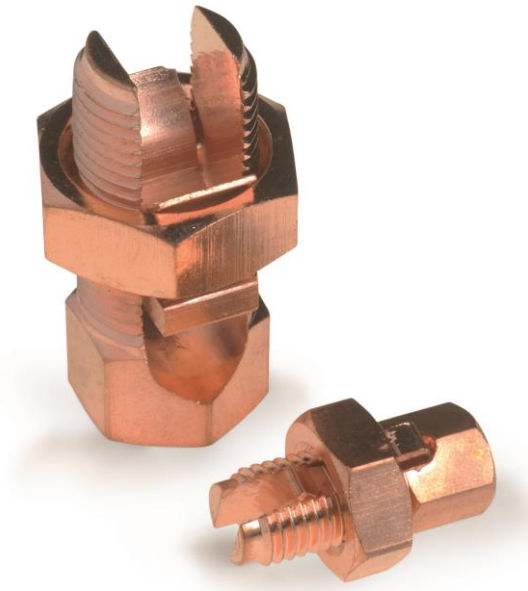




Product Technical Specifications

Model APC COPPER SPLIT BOLT CONNECTOR



Product features

APC split bolt connectors are made of brass with a coppered surface finish to improve electrical contact.

They are used for Cu-Cu junctions and shunts on underground connections.

Raw material characteristics

Body: Brass

Nut: Brass

General bathroom: Copper

Mechanical characteristics

The APC serves the function of ensuring a splice or shunt without slacks, thanks to a good compression of the nut. This requires adequate tightening torque to ensure the recommended clamping.

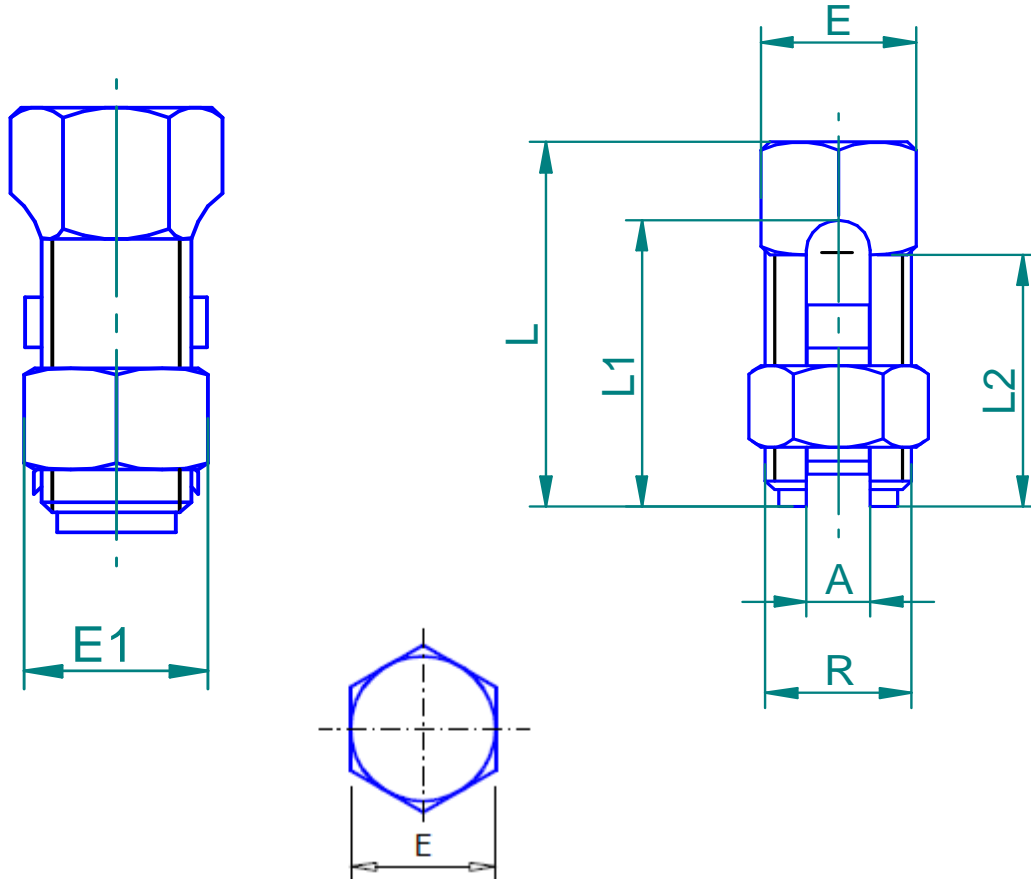
Recommended tightening torque: **30Nm**

Model APC

COPPER SPLIT BOLT CONNECTOR

Dimensions and sections

Dimensional drawing of the connector.



165010	APC-6/6	6	4	6	1,5	24	19	15	3,6	10	12,5	3/8" x 24 UNF
165020	APC-10/6	10	6	10	2,5	27,4	21,8	18	4,5	12	17	7/16" x 20 UNF
165030	APC-16/16	16	10	16		34	22,7	22	5,6	13	18	1/2" x 20 UNF
165040	APC-25/25	25	16	25		41,8	33,1	29	7,2	17	22	5/8" x 18 UNF
165090	APC-35/35	35		35					7,4			
165100	APC-50/50	50	25	50	10	46,4	38	33,5	9,6	18	23	11/16" x 16 UNF
165110	APC-70/70	70	35	70		49,4	42,2		10,8	20	25,5	3/4" x 16 UNF
165115	APC-95/95	95	50	95		53,7	46,4	35,5	12,1	24	27	7/8" x 14 UNF
165120	APC-120/120	120		120		60,5	53,5	39,5	15,3	26,7	30	1" x 12 UNF
165130	APC-185/185	185	70	185	70	69,1	61	43,35	17,6	30	34	1 1/8" x 12 UNF
165140	APC-240/240	240		240		75,6	68	51	21,5	35,4	41	1 3/8" x 12 UNF
Cod.	Ref.	Max.	Min.	Max.	Min.	L	L1	L2	A	E	E1	R
		Principal / Main		Derivado / Tap								

Datos sujetos a cambios
2020, Mayo 14

© 2017 Sofamel SLU
Todos los derechos reservados.

Versión: R2-7.2 COM01

Las especificaciones están sujetas a cambios sin previo aviso.