

# sofamel

Product Technical Specifications

## Mod. TPA

Bolt-fastened tinplated mechanical clamp

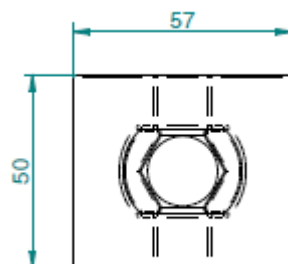
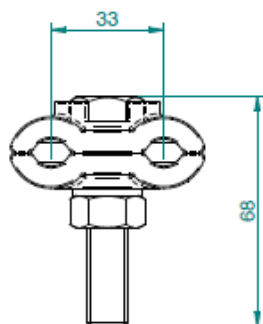
### Product features

The TPA clamp are made of aluminum alloy. Screws in stainless steel M12.

### Certificates

Acceptance criteria based on test requirements described in IEC 61238 STANDARD Compression and mechanical connectors for power cables.

### Section and dimensions



Datos sujetos a cambios  
2020, Mayo 14

© 2017 Sofamel SLU  
Todos los derechos reservados.

Versión: R2-7.2 COM01

Las especificaciones están sujetas a cambios sin previo aviso.