

sofamel

Product Technical Specifications

Mod. T4H

Copper cable lug with 4 holes palm



Functionality

Copper cable lug with two holes palm is manufactured from electrolytic copper with a tinplated finish to improve electrical contact and increase corrosion protection.

Product Features

Manufactured from electrolytic copper with a tinplated finish to improve electrical contact.

Raw Material Features

COPPER

Copper type: **99.9% electrolytic copper.**

Specific gravity: **8.95 gr/cm³.**

Conductivity at 20°C: **58.14 Siemens x m/mm².**

The Sofamel cable lugs are marked with the Sofamel logo and the section.

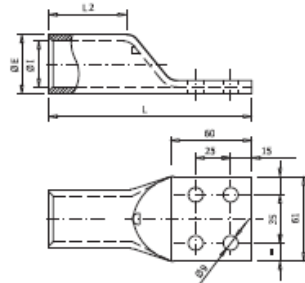
The sections of this product can be from **185 to 800 mm².**



Mod. T4H

Copper cable lug with 4 holes palm

Dimensions



Ref.	Sección (mm ²)	Dimensiones (mm)			
		ØE	ØI	L	L2
T-185/4H	185	23,7	18,8	124,0	46,0
T-240/4H	240	26,2	21,2	128,0	48,0
T-300/4H	300	28,6	23,4	133,0	50,0
T-400/4H	400	32,8	26,8	134,0	50,0
T-500/4H	500	38,4	29,8	139,0	54,0
T-630/4H	630	44,7	34,5	145,0	60,0
T-800/4H	800	52,0	40,0	160,0	70,0

Certificates

Manufactured according to **UNE 20003:1954**:
INDUSTRIAL AND ANNEALED COPPER FOR
ELECTRICAL APPLICATIONS.

They comply with directive – **2011/65/EC** of the
European Union, restriction of certain hazardous
substances (**RoHS**).

CE Marked in accordance with the requirements
of the Low Voltage **Directive 2014/35/EU** of the
European Parliament and of the Council on the
harmonization of the laws of the Member States
relating to the placing on the market of electrical
material intended for use with certain voltage
limits.

Datos sujetos a cambios
2020, Mayo 13

© 2017 Sofamel SLU
Todos los derechos reservados.

Versión: R2-7.2 COM01

Las especificaciones están sujetas a cambios sin previo aviso.