

sofamel

Product Technical Specifications

Mod. TCD

Copper cable lug DIN 46235



Functionality

Copper cable lug for connections of electrical circuits. They are used in a wide range of sections, both for flexible and rigid copper cables in underground distribution networks.

These terminals must be crimped by **hexagonal compression**.

Product Features

Manufactured from electrolytic copper with a tinplated finish to improve electrical contact.

Incorporates a central stop which facilitates the correct cable positioning.

These copper cable lugs are suitable for indoor and outdoor installations if any possible water inlet is sealed by tape or heat shrink, as could be the remaining separation between terminal and cable once crimped.

The Sofamel cable lugs are marked with the Sofamel logo and the section and the ØT.

The sections of this product can be from **6 to 1000 mm²** and the blade drill can have measures of **5, 6, 8, 10, 12, 14, 16 and 20 mm**.



Mod. TCD

Cooper cable lug DIN 46235

Raw Material Features

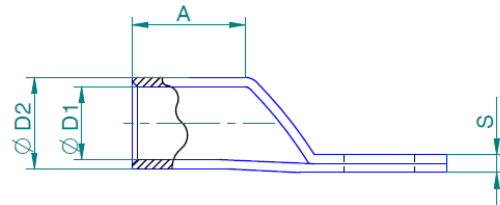
99.9% electrolytic copper.

Specific gravity: **8.95 gr/cm³.**

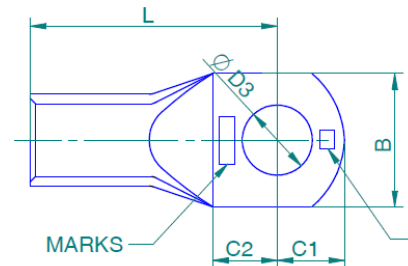
Conductivity at 20°C: **58.14 Siemens x m/mm².**

Resistivity at 20°C: **0.0172 Ohms x mm²/m.**

Surface treatment: **tin bath 5µ thick.**



Dimensions



SEC.	DIE	REFERENCE	MARKS	Ø D2	Ø D1	L	Ø D3	B	C1	C2	A	S
16	8	TCD-16/10	D-16/10	8,5	5,5	37,0	10,5	17,0	14,0	13,0	20,0	2,5
35	12	TCD-35/10	D-35/10	12,5	8,2	43,0	10,5	19,0	14,0	13,0	20,0	2,5
		TCD-35/12	D-35/12			43,0	13,0	21,0	15,0	14,0		
50	14	TCD-50/12	D-50/12	14,5	10	53,0	13,0	24,0	15,0	14,0	28,0	4,0
70	16	TCD-70/12	D-70/12	16,5	11,5	58,0	13,0	24,0	14,0	13,0	28,0	4,5
120	20	TCD-120/12	D-120/12	21,0	15,5	71,0	13,0	30,0	15,0	14,0	35,0	5,5
185	25	TCD-185/12	D-185/12	25,5	19,0	83,0	13,0	37,0	18,0	17,0	40,0	6,0
185	25	TCD-185/16	D-185/16	25,5	19,0	83,0	17,0	37,0	18,0	17,0	40,0	6,0
240	28	TCD-240/12	D-240/12	29,0	21,5	93,0	13,0	42,0	18,0	17,0	40,0	6,5
240	28	TCD-240/16	D-240/16	29,0	21,5	93,0	17,0	42,0	18,0	17,0	40,0	6,5
300	32	TCD-300/12	D-300/12	32,0	24,5	101,0	13,0	48,0	18,0	17,0	50,0	7,0
300	32	TCD-300/16	D-300/16	32,0	24,5	101,0	17,0	48,0	18,0	17,0	50,0	7,0
500	42	TCD-500/12	D-500/12	42,0	31,0	126,0	13,0	60,0	24,0	21,0	70,0	10,0
	42	TCD-500/16	D-500/16				17,0					

Certified

Manufactured according to the standard **DIN 46235** (copper terminals, for compression, tin and copper conductors).