

sofamel

Product Technical Specifications

Mod. TDC/A Bimetallic cable lug

Functionality

TDC/A bimetallic cable lug, designed for electrical circuit connections. Crafted from aluminum alloy bars boasting a purity of 99.5% or greater, these lugs ensure optimal conductivity. The entire surface of the cable lug undergoes a tinning process via electrolytic plating, enhancing durability and electrical performance. With the inclusion of neutral grease, aluminum oxidation is effectively prevented, ensuring long-term reliability. Tailored for overhead cable connections, these lugs are optimized for efficiency. For secure installation, they must be crimped using **hexagonal compression**, ensuring a robust and enduring connection.



Product Features

Manufactured by **HIGH CONDUCTIVITY ALUMINUM** casting with a purity equal to or greater than 99.5% with a tinned surface finish of 15 μ thickness to improve electrical contact and prevent oxidation.

Specially designed for connections with **overhead** cable.

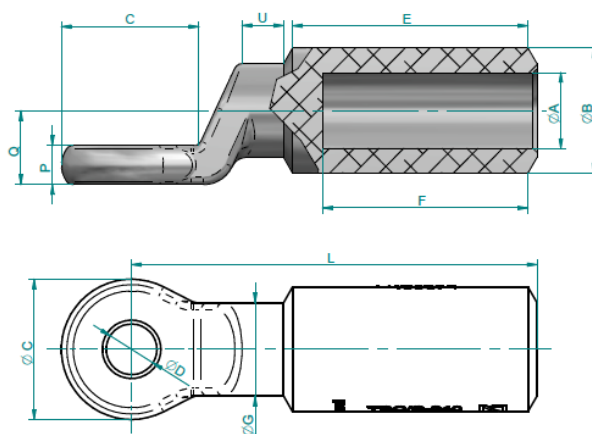
The Sofamel terminals are marked with the Sofamel logo and the driver's section.



Mod. TDC/A

Bimetallic cable lug

Dimensions



Cod.	Ref.	Ø A	Ø B	Ø G MAX	C	Ø D	E	F min	L	P	Q	LT	L1	H	R	U min.					
111085	TDC/S-16/10 ⁽¹⁾	5,5	16,0	12	26,0	45,5	40,0	75,0	7	13,0	88,0	47,1	5	13,0	4,5						
111090	TDC/S-16/12															10,7					
111099	TDC/S-25/10 ⁽¹⁾	12,9																			
111100	TDC/S-25/12	10,7																			
111110	TDC/S-35/12 ⁽¹⁾	12,9																			
111118	TDC/S-50/8*	9,0	20,0	14,8	26,0	50,1	45,0	80,0	7	13,0	93,0	53,1	3	13,0	5,0						
111119	TDC/S-50/10*															9,0					
111120	TDC/S-50/12 ^{*(1)}															10,7					
111130	TDC/S-70/12 ⁽¹⁾															11,0	44,5	40,0	75,0	88,0	48,0
111139	TDC/S-95/10*															10,7					
111140	TDC/S-95/12 ^{*(1)}															12,5					
111200	TDC/A-30/12															7,6	12,9				
111205	TDC/A-54,6/12															10,0	9,0				
111207	TDC/A-56/8															10,0	12,9				
111210	TDC/A-56/12															10,0	50,1	45,0	80,0	93,0	53,1
111220	TDC/A-78/12															12,0	12,9				
111225	TDC/A-80/12	12,5	12,9																		
111150	TDC/S-120/12 ⁽¹⁾	13,7	25,0	18,0	30,0	66,0	60,0	103,0	9,0	15,5	113,0	65,0	3	15,0	6,4						
111159	TDC/S-150/10*	10,7														60,8	55,5	98,0	118,0	70,0	
111160	TDC/S-150/12 ⁽¹⁾	15,5														12,9					
111230	TDC/A-110/12	14,5														66,0	60,0	103,0	118,0	70,0	
111235	TDC/A-145/12	16,5														12,9					
111170	TDC/S-185/12 ⁽¹⁾	17,0	32,0	23,8	36,0	66,0	60,0	109,0	10,0	19,0	122,0	65,0	3	18,0	6,9						
111179	TDC/S-240/10*	10,7														59,7	55,5	104,0	127,0	70,7	
111180	TDC/S-240/12 ⁽¹⁾	19,5														12,9					
111240	TDC/A-180/12	18,3														66,0	60,0	109,0	127,0	70,7	
111184	TDC/S-300/10	23,3	40,0	28,0	40,0	94,0	89,0	145,0	12,5	23,0	165,0	100,0	3	20,0	8,8						
111185	TDC/S-300/12															10,7					
111186	TDC/S-300/16 ⁽¹⁾	12,9																			
111189	TDC/S-400/10	16,7																			
111190	TDC/S-400/12	10,7																			
111191	TDC/S-400/16 ⁽¹⁾	26,0	12,9																		

Datos sujetos a cambios
22 de marzo de 2024

© 2017 Sofamel SLU
Todos los derechos reservados.

Versión: R2-7.2 COM01

Las especificaciones están sujetas a cambios sin previo aviso.



Thomas Alva Edison, 16-17 - Pol. Industrial Plans d'Arau - 08787 La Pobla de Claramunt (Barcelona) - Spain
Tel. +34 93 808 79 80 - Info@sofamel.es
www.sofamel.com



Mod. TDC/A

Bimetallic cable lug

Raw Material Features

ALUMINUM

Aluminum type: **High purity aluminum (99.5% or higher).**

Surface treatment: **tin bath 15 μ thick.**