

sofamel

Product Technical Specifications

Mod. TBEM/S

Bimetallic cable lug

Functionality

TBEM/S terminals are made of 99.5% or higher aluminium alloy tubes with a tinned finish. Neutral grease incorporated to prevent aluminum oxidation.

Product Features

The main application for this kind of terminals is to connect aluminium cables to a copper bars, aluminium and bimetallic applications. The compression of the terminal must be done with hexagonal compression in order to guarantee the good connection to pass all the test described on international cable lug connection standards.

The TBEM/S series were designed to comply the characteristics of the class A terminals. Class A terminals are connectors intended for electricity distribution or industrial networks in which they can be subjected to short-circuit of relatively intensity and duration. Therefore, Class A terminals are suitable for most applications.

Aluminium terminal with a tinned surface made in only one piece of high quality aluminium and with a layer of 15 μm of tin that guarantees a correct behavior against the corrosion due to the humidity and the contact between aluminium with tinned surface and Copper.





Mod. TBEM/S

Bimetallic cable lug

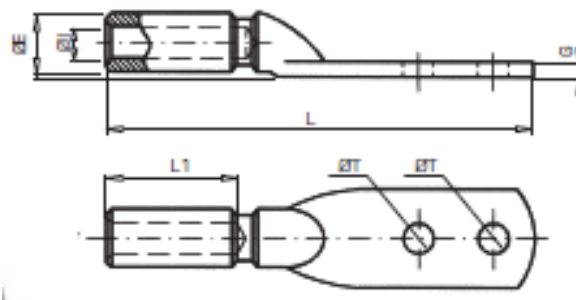
Raw Material Features

- Material: High purity aluminum (min. 99,5%)
- Electrolytic tin-plated surface with minimum thickness of 15µm.
- It incorporates neutral grease to avoid aluminum oxidation

Certificates

They comply with the Standard **CEI-IEC 61238-1** (compression and mechanical connectors for power cables for rated voltages up to 30kV ($U_m=36kV$), part 1: Test methods and requirements.

Dimensions



Código	Ref.	Sección (mm ²)	Dimensiones (mm)						Kg x 100	Bolsa	Caja
			ØE	ØI	ØT	L1	G	L			
125100	TBEM/S-25	25	20,0	6,5	13,0	47,5	7,7	170	13,300	1	60
125110	TBEM/S-35	35	20,0	8,0	13,0	47,5	7,7	170	12,500	1	60
125120	TBEM/S-50	50	20,0	9,0	13,0	47,5	7,7	170	12,000	1	60
125130	TBEM/S-70	70	20,0	11,0	13,0	47,5	7,7	170	11,700	1	50
125140	TBEM/S-95	95	20,0	12,5	13,0	47,5	7,7	170	11,200	1	50
125150	TBEM/S-120	120	25,0	13,7	13,0	64,5	11,6	190	20,700	1	40
125160	TBEM/S-150	150	25,0	15,5	13,0	64,5	11,6	190	19,400	1	40
125180	TBEM/S-240	240	32,0	19,5	13,0	64,5	11,6	199	27,800	1	30

Datos sujetos a cambios
2020, Mayo 13

Versión: R2-7.2 COM01

© 2017 Sofamel SLU
Todos los derechos reservados.

Las especificaciones están sujetas a cambios sin previo aviso.