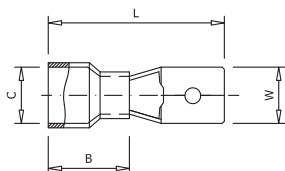


Terminais isolados







Conexões



11003 AFM

Terminal FAST-ON macho isolado

Os terminais AFM são fabricados com fita de cobre eletrolítico e isolamento em PVC. Incorporam uma camisa interna que confere maior segurança para suportar possíveis vibrações mecânicas.

Código	Ref.	Seção (mm ²)	Dimensões (mm)				 x 1.000	 Saco	 Caixa
			W	L	B	C			
295100	AFM-1,5	 1,5	6,35	21,8	10,5	1,7	0,794	100	1600
295110	AFM-2,5	 2,5	6,35	21,8	10,5	2,3	0,882	100	1400
295120	AFM-6,0	 6,0	6,35	24,0	13,0	3,4	1,494	100	800