

# Conectores de Parafuso Fusível

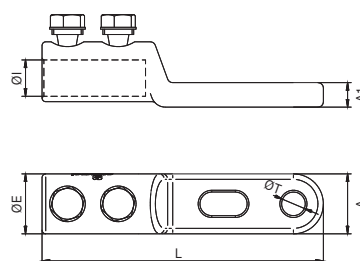
## Conexões









### 10201 TTG2

#### Terminal com parafuso fusível

Os terminais TTG/2 são fabricados por injeção de alumínio de alta condutividade, com pureza igual ou superior a 99,5%, e possuem acabamento superficial estanhado que cobre toda a superfície do terminal por meio de um banho eletrolítico.



Código	Ref.	Seção (mm²)		Long. desforre			Dimensões (mm)								
							ØE	ØI	L	ØT	A	A1			
101180	TTG/2-240/10	95 - 240	2	60	2 x M17	17	33	20	155	11	33	13,5	22,300	1	-
101185	TTG/2-240/12						33	20	155	13	33	13,5	21,700	1	-
10201001	TTG/2-400/12	240 - 400	2	75	2 x M22	22	40	26	180	13	40	13,5	29,700	1	-
10201002	TTG/2-400/16						40	26	180	17	40	13,5	29,700	1	-
10201003	TTG/2-630/12	630	2	95	2 x M24	24	55	32	215	13	55	21,0	-	1	-